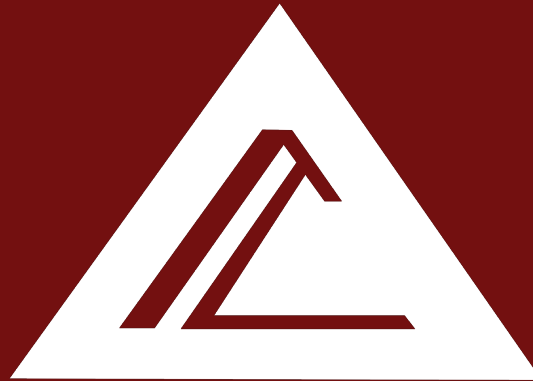


A large, stylized mountain logo in dark red and black, composed of geometric shapes, occupies the left side of the slide.

ADVANCED CONSTRUCTION CO.

Solving New Challenges with Excellence
& Innovation



**ADVANCED
CONSTRUCTION
CO.** Solving New Challenges with Excellence
& Innovation

TABLE OF CONTENTS

01	About Us	3
02	Our Services	11
03	Projects	13
04	Certificates	61
05	Clients	63
06	Approved By	65

01

ABOUT US

Chairman's Message

Established in 2002, Advanced Construction Company has experienced significant growth and adaptability. With a successful track record of over 150 completed projects, we have solidified our position as a leading contractor in the construction sector.

This growth trajectory, particularly evident in the last two years, underscores our unwavering commitment to excellence and innovation. We consistently deliver high-quality projects on time and within budget, consistently exceeding client expectations.

These achievements are a direct result of our dedication to quality and our core values: integrity, transparency, and sustainability. These principles are deeply ingrained in our corporate culture and serve as the foundation for our continued success.

At ACC, we recognise the importance of collaboration. Our strategic partnerships and a robust network of professionals significantly enhance our capabilities, allowing us to confidently undertake complex and large-scale projects with unwavering confidence.

I would like to express my sincere gratitude to all our employees, clients, and partners for their continued support. We eagerly anticipate the exciting opportunities that lie ahead and remain steadfast in our commitment to building a brighter future.

Mohammed Ali Al-Gheithy Al-Shareef

Who We Are

ESTABLISHED IN

2002

MADE IN

Saudi

MOMRAH CLASSIFICATION

1st Class

For over 22 years, Advanced Construction Company (ACC) has been a leading force in the Saudi Arabian construction industry, renowned for our commitment to professionalism, innovation, and unwavering trust. We specialise in delivering high-quality and sustainable construction solutions for discerning clients, including government agencies, large corporations, and the prestigious Public Investment Fund (PIF).

Our dedication to excellence has earned us the top classification in MOMRAH (The Ministry of Municipal and Rural Affairs & Housing), a testament to our expertise, safety standards, and adherence to best practices. We leverage cutting-edge technology and a highly skilled workforce to consistently exceed expectations and deliver high-quality projects on time, within budget, and to the highest standards.



Statement of Purpose

MISSION: To empower our teams to build a better future by delivering innovative and sustainable construction solutions that exceed client expectations, enhance communities, and foster a culture of safety and excellence.

VISION: To be a globally recognised leader in the construction industry, renowned for delivering innovative, sustainable, and impactful projects that exceed client expectations, enrich communities, and empower our people to reach their full potential.

VALUES: At Advanced Construction Co., we operate with integrity, excellence, and innovation. We prioritise safety and sustainability, fostering strong partnerships to exceed client expectations and create a positive impact on our communities.

Our Team

TOTAL MANPOWER:

2000+

PROFESSIONALS:

450+

ENGINEERS:

250+

Our Management and Supervisory Staff of the Company consist of a multinational team, with extensive professional training and many years of experience in their respective trades, of which the majority have been with the company for more than a decade, which has allowed us to gain a regional reputation within the construction industry.



Mohammed Ali
Al-Gheithy

Chairman



Antoine
Labaki

CEO



Zuhdi
Elayyan

CFO



Rami
Labaki

COO



Ibrahim
Al-Samdani

REP

TOP MANAGEMENT

Chairman

Board of Directors

CEO

COO

CFO

Business
Development

Company
Representative

IT & ERP

Legal

Tendering

DEPARTMENTS

PMO

Government
Relations

HR &
Administration

HSSE

Procurement

Projects
Control

Quality

Finance

Design

Government
Contracts

Admin

Health

Contracts

Cost Control

Quality
Assurance

Accounting

Equipment &
Maintenance

Stakeholder
Management

Employee
Affairs

Safety

Logistics

Planning

Quality
Control

Finance

Formwork

Recruitment

Security

Procurement

Document
Control

Insurance

PMT

Salary &
Payroll

Environment

Warehouse

Treasury

Technical

Training

SUB-SECTION

Our Equipment

600+

EARTH MOVING EQUIPMENT



NAME:

- Backhoe Loader
- Bulldozer
- Crawler Excavator
- Grader
- Mini Excavator
- Skid Loader
- Wheel Excavator
- Wheel Loader

QUANTITY:

150+

HEAVY TRUCKS



NAME:

- Bus
- Dump Box Truck
- Flat-Bed Truck
- Low-Bed Truck
- Water Tank Truck

QUANTITY:

90+

MATERIAL HANDLING EQUIPMENT



NAME:

- Boom Truck
- Forklift
- Mobile Crane
- Telescopic Handler

QUANTITY:

70+

ROAD CONSTRUCTION EQUIPMENT



NAME:

- Roller Compactor (1-3 T)
- Roller Compactor (10-12 T)

QUANTITY:

40+

LIGHT EQUIPMENT



NAME:

- Compressors
- Generators
- Etc...

QUANTITY:

250+

Advanced Construction Co. boasts a comprehensive fleet of equipment, ranging from heavy earthmoving machinery to specialised light equipment. Committed to ongoing growth, the company maintains a substantial inventory exceeding 1000 units across its diverse project portfolio. This extensive fleet is supported by strategic collaborations with a network of esteemed subcontractors and suppliers.

OUR SERVICES

02

Advanced Construction Co. is a leading contractor, specialising in innovative and exceptional construction solutions. We deliver a wide range of services across diverse sectors, including civil engineering, building construction, infrastructure development, and maintenance.



Design & Technical Support

With a core focus on landscape architecture, we possess a comprehensive design approach. We prioritise client needs, sustainable practices, and advanced technology to deliver exceptional results.



Construction

Our expertise spans a wide range of projects, including bridges, underpasses, landscaping, and infrastructure development. We consistently deliver complex projects on time, within budget, and with a strong safety focus.



Rehabilitation

We specialise in the careful rehabilitation of older or historic structures. Our skilled team restores these structures, preserving their architectural character and historical significance. We approach each project with respect for the past, ensuring these important structures continue to serve their community for generations.



Maintenance

We specialise in providing maintenance solutions that effectively address the unique needs of our diverse client base. By carefully considering the specific requirements of each project, we ensure that our maintenance services are tailored to meet the individual needs and expectations of every client.

CIVIL ENGINEERING & INFRASTRUCTURE

- Bridges
- Dams & Reservoirs
- Landscape
- Roads & Highways
- Site Development
- Underpasses
- Utility Networks
- Wastewater Treatment Plants

BUILDING CONSTRUCTION

- Commercial Buildings
- Educational Facilities
- Healthcare Facilities
- Hotels & Resorts
- Industrial Buildings
- Residential Buildings

SPECIALTY CONSTRUCTION

- Enabling Works
- Heavy Civil Works
- Industrial Construction
- Marine Construction
- Rehabilitation

Scope of Work

BRIDGES & UNDERPASSES



LANDSCAPE



ROADS & HIGHWAYS



ENABLING WORKS



MARINE



BUILDINGS



UTILITY NETWORKS



REHABILITATION



OTHER



03

PROJECTS



Ongoing

PROJECTS:

16

VALUE:

ﷲ 3B+

Complete

PROJECTS:

153

VALUE:

ﷲ 4.4B+

BRIDGES & UNDERPASSES

47

COMPLETE:

40

ONGOING:

7

TOTAL VALUE:

₱ 3.4B+

LANDSCAPE

7

COMPLETE:

2

ONGOING:

5

TOTAL VALUE:

₱ 2B+

CIVIL & ENABLING WORKS

51

COMPLETE:

50

ONGOING:

1

TOTAL VALUE:

₱ 1.3B+

OTHER

64

COMPLETE:

61

ONGOING:

3

TOTAL VALUE:

₱ 720M+

Advanced Construction Co. is proud to showcase a portfolio of some of its recent projects, reflecting the company's sustained growth trajectory over the past two years and into the future.





King Salman Park

LOCATION:

Madinah

CLIENT:

Madinah Regional Municipality

STATUS:

Ongoing

This significant development project, valued at 449,937,500 SAR, encompasses a substantial 1,040,125 m² and incorporates a diverse range of specialised features, including a dedicated Plant Museum, an Open Theatre, a captivating Heritage Area, and a network of serene Lakes and Fountains. Key project elements include a Games Area spanning 7,288 m², an expansive Softscape Area encompassing 630,000 m², a comprehensive network of Pedestrian Paths extending 28,200 m, and 4,200 m of dedicated Bicycle Paths. The project boasts extensive infrastructure, featuring 1,228 strategically placed lighting poles, 7,150 trees, 243,788 bushes, 2,478 benches, and 3,497 parking spaces.

The scope of work encompasses a multifaceted development program, including meticulous landscaping, robust infrastructure development, extensive excavation, the installation of essential utilities, and the implementation of an efficient irrigation system. Furthermore, the plan strategically delineates distinct zones, each serving a unique purpose: fostering green spaces, providing engaging entertainment areas, stimulating economic growth through investment hubs, enriching the community through cultural and educational facilities, and promoting healthy lifestyles through dedicated sports areas. This significant undertaking has the potential to significantly enhance the surrounding area and enrich the lives of its residents and visitors.

₹ 449,937,500



SECTION D-D

SECTION C-C

SECTION B-B

SECTION A-A



Dhahrat Namar Linear Park

LOCATION:

Riyadh

CLIENT:

RCRC - Green Riyadh

STATUS:

Ongoing

The Linear Park Project is a significant urban development initiative spanning an impressive 20 km. This ambitious undertaking, valued at 391,369,514 SAR, encompasses a Total Area of 2,265,510 m². The project began with extensive site preparation to transform a previously neglected area into a vibrant green corridor within the city. This involved excavating 750,000 m³ of waste material and backfilling 600,000 m³ to create a stable and suitable foundation for development.

The project involves a comprehensive scope of work, including extensive earthworks such as excavation and the installation of planting cells, the implementation of robust landscaping efforts encompassing the planting of numerous trees and the application of agricultural soil, the construction of essential infrastructure such as water tanks and the drilling of deep wells to ensure the sustainability of the park's ecosystem, and the meticulous execution of hardscaping, utility installations, electrical and lighting works, irrigation systems, and site furnishing.

The Linear Park will serve as a vital community asset, offering a diverse range of recreational opportunities for residents of all ages and abilities. It will provide a valuable green space for relaxation, exercise, and social interaction, while also contributing to the overall environmental health and aesthetic appeal of the city.

₹ 391,369,514





Eastern Ring Rd. w/ G20 Rd.

LOCATION:

Riyadh

CLIENT:

RCRC - Green Riyadh

STATUS:

Ongoing

The Highway Landscaping Project is a significant undertaking spanning a substantial distance of 80 km (2 Directions) in an open area. This project, valued at 365,272,717 SAR, encompasses a Total Area of 750,000 m² and involves a comprehensive scope of work to enhance the visual appeal and environmental impact of the highway corridor.

The project includes the construction of an extensive irrigation network spanning 85,600 m, the planting of 4,356 trees, the installation of 18 irrigation tanks, and the application of 120,000 m³ of agricultural soil and 280,000 m³ of gravel. Furthermore, the project encompasses significant earthworks, including excavation and the removal of 360,000 m³ of existing materials.

Landscaping efforts include the planting of 278,000 m² of shrubs and ground cover, and the installation of 115,000 m of kerbstones. The project culminates in the construction of 146,500 m² of concrete paving.

₹ 365,272,717





Dirab Rd. w/Nafoud Rd. - B&U

LOCATION:

Riyadh

CLIENT:

Riyadh Regional Municipality

STATUS:

Ongoing

This project aims to improve traffic flow and safety at the intersection of Dirab Road and Al-Nafoud Road, located 9 km from Riyadh's Southern Ring Road.

Key project components encompass the construction of a bridge & underpass designed to facilitate smoother traffic flow, the implementation of a dedicated directional ramp for westbound traffic, and the incorporation of associated landscaping and lighting enhancements to augment overall aesthetics and visibility.

This project encompasses the construction of a significant infrastructure development, including a Southern Bridge spanning 800 m. The bridge comprises 5 spans strategically divided into two distinct units: a robust Box Section and a substantial Deck Slab. Furthermore, the project encompasses the construction of a substantial tunnel along Dirab Road, extending approximately 1600 m in length.

The successful execution of this project necessitates the undertaking of substantial construction activities. These encompass extensive excavation works amounting to 303,000 m³, followed by meticulous filling operations totalling 73,000 m³. The project also necessitates the utilisation of significant quantities of construction materials, including 76,275 m³ of concrete, 10,000 mt of reinforcing steel, and 475 mt of pre-stressed steel. Additionally, the project necessitates the execution of 1,380 m of piling work.

₹ 294,618,500



1

2

3

4

5



Aqiq Neighbourhoods Parks

LOCATION:

Madinah

CLIENT:

Madinah Regional Municipality

STATUS:

Ongoing

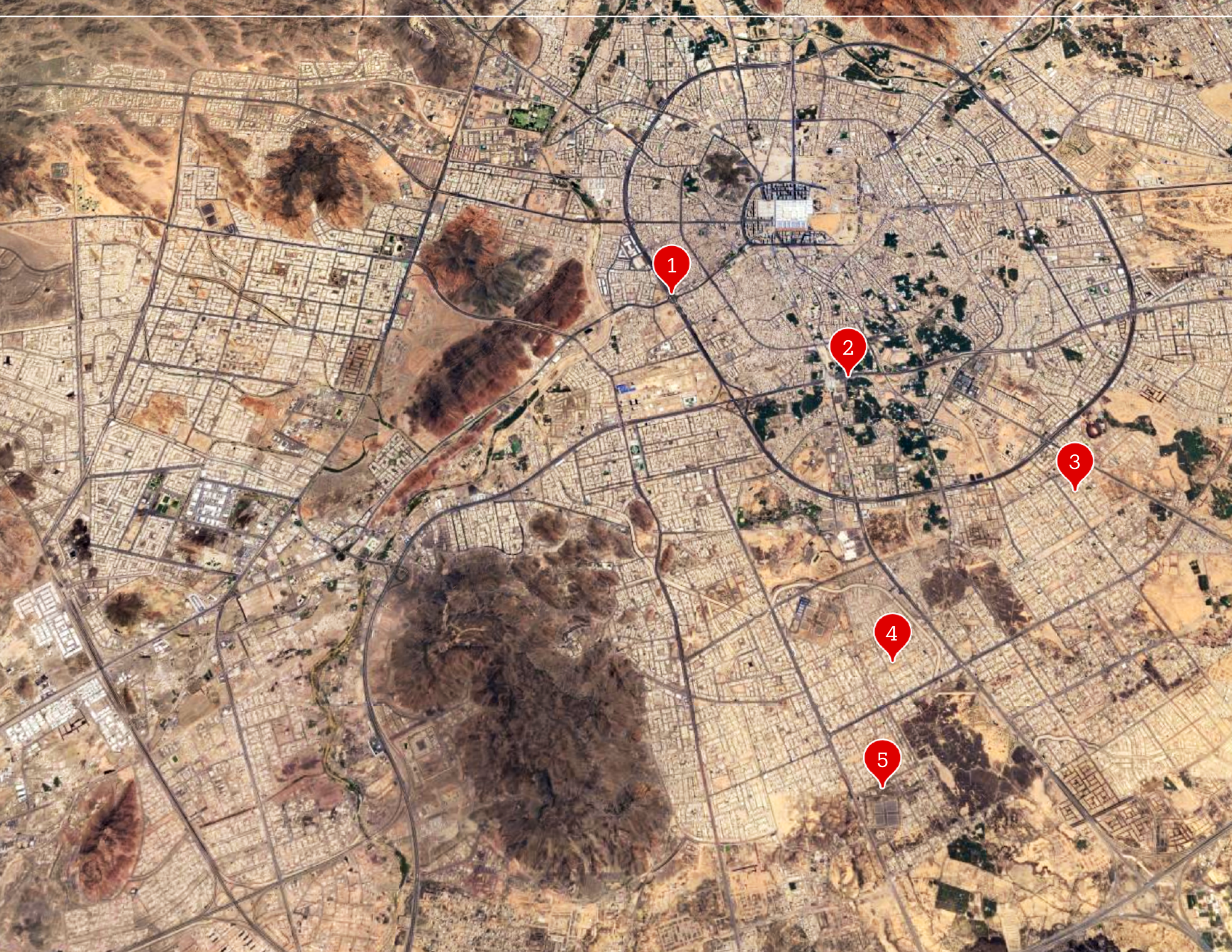
This project encompasses the development of 5 scattered gardens within the residential neighbourhoods of Al-Aqiq Municipality. The scope of work includes the creation of distinct garden spaces, incorporating both soft and hard landscaped elements. Furthermore, the project encompasses the construction of necessary infrastructure, including roads and parking facilities.

The project carries a total value of 263,994,000 SAR. It encompasses a Total Area of 619,873.84 m², incorporating key features such as a Games Area of 4,856.21+ m², a significant Softscape Area of 168,944+ m², 228,792+ m of Pedestrian Path, 12,401+ m of Bicycle Path, 651+ Lighting poles, 3,535+ Trees, 81,290+ Bushes, 804+ Benches, and 2,347+ Car Parking spaces.

Parks:

1. Al-Qiblaten Park
2. Al-Anabis 4 Park
3. King Abdulaziz Square Park
4. Prince Mansour Park
5. Hamra Al-Asad Park

ﷲ 263,994,000



1

2

3

4

5



Quba Neighbourhoods Parks

LOCATION:

Madinah

CLIENT:

Madinah Regional Municipality

STATUS:

Ongoing

This project encompasses the development of 5 scattered gardens within the residential neighbourhoods of Quba Municipality. The scope of work includes the creation of distinct garden spaces, incorporating both soft and hard landscaped elements. Furthermore, the project encompasses the construction of necessary infrastructure, including roads and parking facilities.

The project carries a total value of 254,978,000 SAR. It encompasses a Total Area of 509,487.9 m², incorporating key features such as a Games Area of 6,069.7 m², a significant Softscape Area of 216,511.19 m², 127,757.4 m of Pedestrian Path, 15,211 m of Bicycle Path, 780 Lighting poles, 2,793 Trees, 173,347 Bushes, 890 Benches, and 912 Car Parking spaces

Parks:

1. Al-Dhahirah 1 Park
2. Bani Anif Mosque Park
3. Shuran 1 Park
4. Al-Ranuna 2 Park
5. Al-Ranuna 3 Park

ﷲ 254,978,000





Shuaib Ghudwanah Park

LOCATION:

Riyadh

CLIENT:

RCRC - Green Riyadh

STATUS:

Complete

The Shuaib Wadi Ghudwanah branch of the Wadi Hanifa development project is a significant undertaking spanning 4.5 km. This ambitious project encompasses a wide scope of work, including extensive earthworks requiring the excavation of 800,000 m³ with a backfilling of 1,000,000 m³.

Furthermore, the project involved the establishment of a robust ecological framework through the planting of 6,768 trees, supported by the installation of 19,573 m² of planting cells. To ensure the flourishing of this newly established ecosystem, 9,829 m³ of agricultural soil will be meticulously applied.

The project's infrastructure will be further enhanced by the construction of 5 water tanks with a combined capacity of 650 m³, complemented by the drilling of five deep wells to provide a reliable water source for irrigation and maintenance. The total project area encompasses 727,574 m². The project has a value of 254,978,000 Saudi Riyals.

ﷲ 253,887,916





Madinah Rd. w/ Pr. Mohammed - Underpass

LOCATION:

Jeddah

CLIENT:

Jeddah Municipality

STATUS:

Complete

This project involved the construction of a 1,000 m long, 20 m wide underpass on Prince Mohammed bin Abdulaziz Street at its intersection with Madinah Road.

The underpass accommodates two traffic directions with two lanes each.

The project scope included the relocation of utilities, extensive roadworks, landscaping, structural support for the existing bridge, and a new stormwater drainage system.

The construction of the underpass necessitated the implementation of several support measures to safeguard the integrity of the existing bridge. These measures included the installation of micro-piles around the bridge footings, augmentation of the existing concrete footing volume, and the addition of a new support system consisting of 4 steel columns. Finally, a heavy lifting method was employed to transfer deck loads from the existing piers to the newly constructed support structure.

Excavation for the underpass was conducted using the open excavation method, incorporating a pile shoring system with top struts for soil stability during the deep excavation phase. An injection plug was utilised to minimise the volume of dewatering required and mitigate potential settlement risks to surrounding structures. A comprehensive monitoring system was established to continuously track any settlement that might occur during the excavation process.

Key project figures include an excavation volume of 100,000 m³, a concrete volume of 90,000 m³, and the utilisation of 13,000 mt of steel. The underpass incorporates pre-cast, post-tensioned I-girders for its deck structure.

₹ 240,393,735





Pr. Muteib Rd. w/ Pr. Naif Rd. - B&U

LOCATION:

Dammam

CLIENT:

Dammam Municipality

STATUS:

Complete

This project encompassed the construction of a substantial 1,724 m long bridge featuring a box girder deck. The construction phase necessitated a significant volume of earthworks, amounting to 150,000 m³ of excavation. Concrete constituted a major component, with 62,835 m³ utilised for lower structures and an additional 23,648 m³ employed for upper structures. Furthermore, the bridge incorporated 710.60 mt of prestressed steel, contributing to its structural integrity and load-bearing capacity.

The bridge's key specifications include a substantial distance of 1,724 m and the utilisation of a box girder design for the deck. These specifications, along with the substantial quantities of materials employed, underscore the scale and complexity of this engineering undertaking.

₹ 231,800,000



An aerial photograph of a city intersection in Madinah, Saudi Arabia. A bridge is under construction, crossing over a road. The surrounding area is densely packed with buildings and roads. The bridge is a two-way structure with multiple lanes.

Safia Rd. - Bridge

LOCATION:

Madinah

CLIENT:

Madinah Regional Municipality

STATUS:

Ongoing

This project entails the construction of a two-way bridge located at the intersection of King Faisal bin Abdulaziz Road with Quba Street and Al-Amir Abdul Mohsen Road (Qurban up and down). The bridge design incorporates 3 traffic lanes in each direction, with each lane spanning 3.5 m in width. To facilitate access and egress, the project included the construction of dedicated ramps. Furthermore, a service road parallel to the main bridge was constructed, measuring 3.65 m in width.

Key project figures include a total cost of SAR 204,930,000 and a total length of 950 m. The project necessitated significant construction activities, including the excavation of 150,000 m³ of earth and the pouring of 114,483 m³ of concrete. A substantial amount of prestressed steel, amounting to 5,500 mt, was utilised in the bridge's construction.

ﷲ 204,930,000

Pr. Majed Rd. w/ Old Mecca Rd. - B&U

STATUS:

Complete

The construction project encompassed the building of a 1,500 m bridge of 3 lanes in each direction and a pre-cast post-tensioned U-shaped deck and an 800 m underpass with two lanes in each direction and a cast-in-situ deck.

The project involved utility re-routing, excavation of 90,000 m³ of material, and the pouring of 86,483 m³ of concrete. Additionally, 7,100 mt of steel were utilised.



LOCATION:

Jeddah

VALUE:

ﷲ 197,500,000

CLIENT:

Jeddah Municipality

STATUS:

Ongoing

This project involves the construction of 3 bridges spanning a canal.

B 1: 3 lanes/direction, 381.2 m long, 15.35 m wide/direction.

B 2: 2 lanes/direction, 301.67 m long, 11.1 m wide/direction.

B 3: 3 lanes/direction, 304.24 m long, 15.35 m wide/direction.

The substructure will utilise 1,050 mm diameter piles and pier caps. The superstructure will feature a cast-in-situ post-tensioned concrete voided slab deck. MSE wall ramps will facilitate approaches. Essential utilities, including street lighting and stormwater drainage, will be included.

Al-Arous - 3 Bridges



LOCATION:

Jeddah

VALUE:

ﷲ 185,161,551

CLIENT:

ROSHN

Upgrading Critical Intersections

STATUS:

Ongoing

Comprehensive road infrastructure enhancement project is underway in Riyadh, focusing on upgrading and developing 11 critical intersections.

These improvements will be implemented at key junctions along Al Thumamah Road, Omar Bin Abdulaziz Road, Salah Al Din Road, Makkah Al Mokaramah Road, and at road entrance points to King Khaled Road.

This initiative aims to significantly enhance traffic flow, reduce congestion, and improve overall road safety within the city.



LOCATION:

Riyadh

VALUE:

₹ 153,700,000

CLIENT:

RCRC

Royal Commission for Riyadh City

STATUS:

Complete

This project encompassed the construction of a marine terminal featuring a 300 m berth length and a bulk material handling capacity of 60,000 m³.

The project required significant dredging, reaching a depth of 16.5 m and involving the removal of 2,000,000 m³ of material.

Key construction quantities included 50,000 m³ of stone backfilling, 60,000 m³ of concrete, and 100,000 m³ of general backfilling.

Bulk Terminal Berth No.10



LOCATION:

Yanbu

VALUE:

¥ 134,000,000

CLIENT:

Y.C.P

Yanbu Commercial Port

Tandabawi 2nd Ring Rd. - Bridge

STATUS:

Complete



This project encompassed the construction of five bridges, involving extensive civil engineering works such as roadworks, demolition, site preparation, earthworks, infrastructure development, and the installation of utility networks including storm water and power systems.

The project utilised significant quantities of materials, including 23,200 m³ of concrete, 211,000 m³ of excavation, and 2,800 mt of steel.

Key specifications include a total length of 3,000 m, a bridge length of 500 m, and the use of prestressed beams for the deck.

LOCATION:

Makkah

VALUE:

₹ 126,500,000

CLIENT:

MRDA

Makkah Region Development Authority

STATUS:

Complete

The proposed bridge encompasses a total length of 1,800 m, comprising 900 m in each direction. It features a lane configuration of 3 traffic lanes and 1 dedicated bus lane per direction. The bridge deck was constructed using a cast-in-situ box section.

Construction required approximately 18,000 m³ of concrete, 15,000 m³ of excavation, and 4,800 mt of steel.

To ensure the steady flow of traffic during construction, a gantry shoring system was implemented.

K. Abdulaziz Rd. w/ K. Abdullah Rd. (3 stages)



LOCATION:

Madinah

VALUE:

₹ 119,584,930

CLIENT:

Madinah Municipality

Independent Sewage Treatment Plant

STATUS:

Complete

This 90,000 m² wastewater treatment plant handles 100,000 m³ daily.

The project involves extensive civil works, including building construction, water tanks, and underground piping (100 - 2,500mm).

Key quantities include 130,000 m³ of excavation, 30,000 m³ of concrete, and 11,000 m of pipes. The site is secured with 1,780 m of HCIS fencing and one gate.



LOCATION:

Taif

VALUE:

¥ 117,500,000

CLIENT:

TICC

Taif Independent Construction Co.

STATUS:

Complete

This project involves comprehensive civil engineering works, including bridge and road construction, demolition, site preparation, earthworks, and infrastructure development.

It features a 70 m pedestrian bridge, a 700 m, four-lane vehicular bridge, and extensive utility networks (stormwater, power).

The project utilises precast elements and involves 22,000 m³ of concrete and 791,000 m³ of excavation.

Shuttle Road



LOCATION:

Makkah

VALUE:

₹ 113,800,000

CLIENT:

MRDA

Makkah Region Development Authority

K. Khalid Rd. w/ Khalid Bin Al-Waleed St. - B&U

STATUS:

Ongoing

The K. Khalid Rd. w/ Khalid Bin Al-Waleed St. - B&U project encompasses a net bridge length of 580 m and a total length of 1850 m, including ramps.

The project's scope necessitates the use of 40,000 m³ of concrete, alongside significant earthworks involving 90,000 m³ of excavation and 70,000 m³ of filling.



LOCATION:

Taif

VALUE:

SR 113,698,900

CLIENT:

Taif Municipality

STATUS:

Complete

This project involves extensive civil engineering work, including tunnel and bridge construction, roadworks, demolition, site preparation, and earthworks.

It features a 900 m, 3-lane roadway (2 Directions) with a dedicated centre lane for metro services.

The project's scope is significant, encompassing 32,186 m³ of concrete, 266,827 m³ of excavation, and 5,296 mt of steel.

Pr. Saad w/ Haroon Al-Rasheed St. - Underpass



LOCATION:

Riyadh

VALUE:

ﷲ 93,757,200

CLIENT:

Riyadh Municipality

K. Fahad Rd. w/ Sari St. - Bridge

STATUS:

Complete



The K. Fahad Rd. w/ Sari St. Bridge is a 1,000 m long, 20 m wide, 2-way traffic bridge featuring a cast-in-situ box girder deck.

The construction of this bridge necessitated the relocation of a 85-ton roundabout structure.

The project's material requirements included an estimated 35,000 m³ of concrete, 30,000 m³ of excavation, and 7,000 mt of steel.

LOCATION:

Jeddah

VALUE:

ﷲ 92,767,500

CLIENT:

Jeddah Municipality

STATUS:

Complete

This infrastructure project, comprising a 3-lane underpass in both directions, spans a total length of 1,100 m.

Key quantities involved in its construction included 45,000 m³ of concrete, 52,000 m³ of excavation, and 6,500 mt of steel.

K. Fahad Rd. W/ K. Khalid Rd. - Underpass



LOCATION:

Tabuk

VALUE:

₹ 91,850,831

CLIENT:

Tabuk Municipality

Sari St. w/ Pr. Majid Rd. - Bridge

STATUS:

Ongoing

This project entails the construction of a 792-m, 2-lane bridge, along with 730 m of new roadway and the improvement of 450 m of Mullah Niyazi Street.

Key infrastructure components include utility relocation, a stormwater drainage system, a comprehensive lighting system, and 6,500 m² of green space featuring an irrigation system.



LOCATION:

Jeddah

VALUE:

ﷲ 91,060,220

CLIENT:

Jeddah Municipality

STATUS:

Complete

The Arafat Rd. w/ Al-Aziziyah Rd. Bridge project encompasses a comprehensive scope of civil engineering works, including bridge construction, roadworks, demolition, site preparation, earthworks, infrastructure development, and the installation of utility networks such as storm water and power systems.

The bridge spans 900 m in length, requiring an estimated 25,000 m³ of concrete, 10,000 m³ of excavation, and 5,000 mt of steel.

Arafat Rd. w/ Al-Aziziyah Rd. - Bridge



LOCATION:

Riyadh

VALUE:

SR 89,071,044

CLIENT:

Riyadh Municipality

Imam Muslim Rd. w/ Wadi Baqra - Bridge

STATUS:

Complete

This project involves comprehensive civil engineering works including bridge construction, roadworks, and infrastructure development.

It features a 300 m, 4-lane bridge (2 Directions) with a pre-cast, post-tensioned deck supported by 336 piles, 8 foundations, and 32 columns, each with a height of 32 m.

The project utilises 30,000 m³ of concrete, 53,685 m³ of excavation, and 6,409 mt of steel. Key works include girder installation, deck slab construction, and post-tensioning.



LOCATION:

Riyadh

VALUE:

﷼ 87,318,996

CLIENT:

Riyadh Municipality

STATUS:
Complete

This project involves Bridge Works, Roadworks, Site Preparation, Earthworks, Infrastructure, and Utility Network installations. Key activities include traffic detours, utility relocations, site clearance, foundation construction, reinforcement, and the construction of an 810 m, six-lane bridge using a cast-in-situ deck slab (box section).

The project utilises 10,000 m³ of concrete, excavate 20,000 m³ of material, and incorporates 3,500 mt of steel.

An-Nasr Rd. w/ Al-Aziziyah Rd. - Bridge



LOCATION:

Riyadh

VALUE:

₹ 82,800,000

CLIENT:

Riyadh Municipality

Dammam Underpass

STATUS:

Complete

This project encompasses the construction of a 700 m long underpass, requiring extensive civil engineering works.

These works include bridges, roads, site preparations, earthworks, infrastructure, and utility networks, such as stormwater and power systems.

The project's scale is substantial, with a concrete volume of 24,915 m³, 112,688 m³ of excavation, and 1900 mt of steel required for its completion.



LOCATION:

Dammam

VALUE:

₹ 68,103,220

CLIENT:

Dammam Municipality

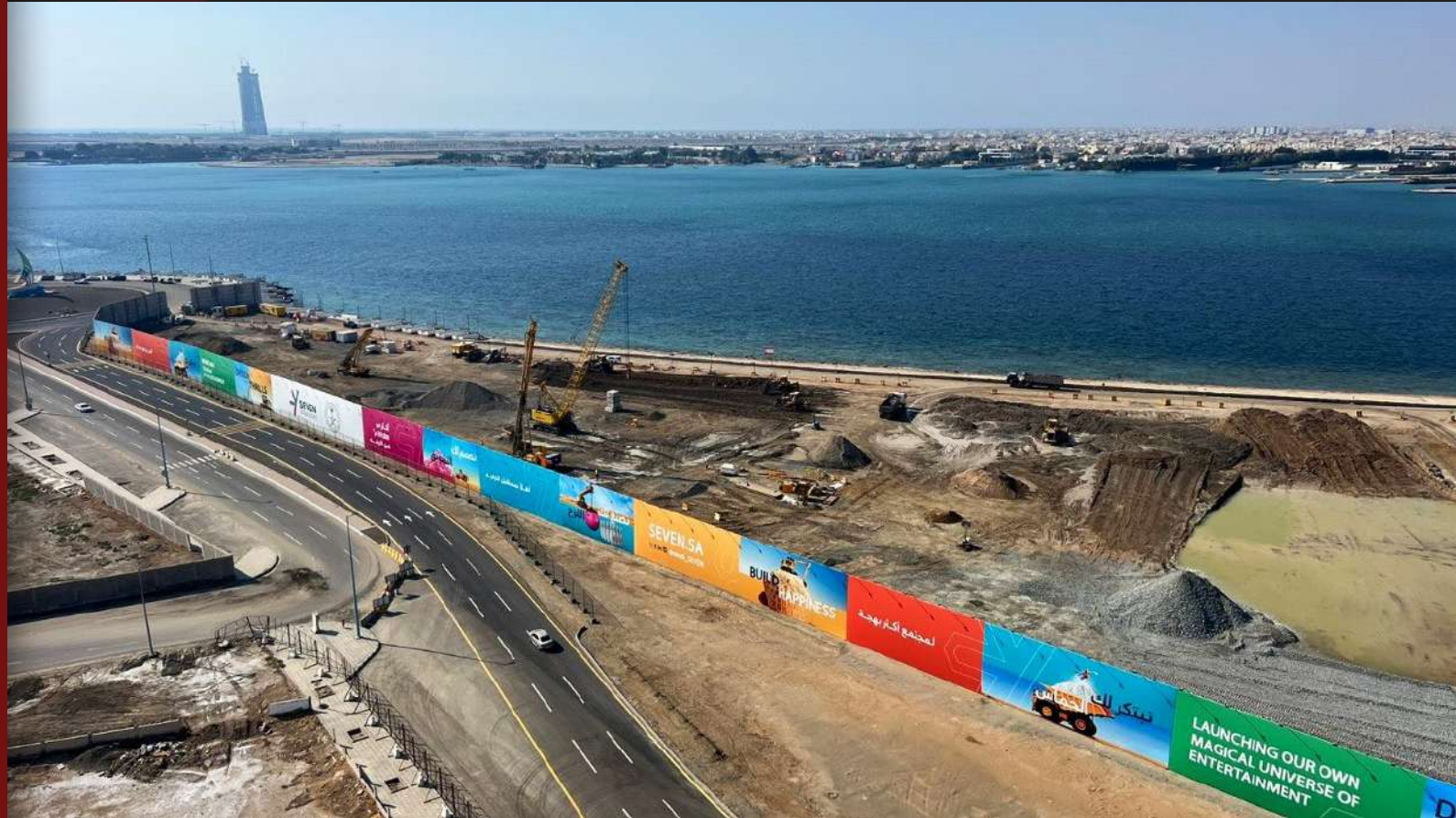
STATUS:

Complete

The construction project utilises site hoarding measuring 1,080 m in length and 8 m in height. This hoarding was constructed using concrete footings, steel structures, cement board, and a printed banner.

Site and ground improvement works encompass excavation, the placement of structural fill above the groundwater table, the installation of vibrated stone columns, cavity probing and injection, and the subsequent testing of these ground improvement measures.

Obhour - Enabling Works



LOCATION:

Jeddah

VALUE:

₹ 63,900,000

CLIENT:

SEVEN

Saudi Entertainment Ventures

Administration Building

STATUS:

Complete

The project encompasses a wide range of construction activities, including Building Works, Demolition & Site Preparation, Earthworks, Infrastructure Works, Landscape Works, Utility Networks, and Electro-mechanical Works.

The project utilises 12,230 m³ of concrete and 2,250 mt of steel. The building features a conference hall accommodating 106 visitors, 34 official rooms, 3 high-class meeting rooms, and 5 elevators. The facility also includes 200 covered car parking spots. The 16,000 m² landscape area was planted with grass and trees and irrigated with an automatic system.

LOCATION:

Yanbu

VALUE:

₪ 53,628,316

CLIENT:

Y.C.P

Yanbu Commercial Port

STATUS:

Complete

This project encompassed a comprehensive scope of work including bridge construction, roadworks, demolition, site preparation, earthworks, and infrastructure works.

The project involved the installation of utility networks such as storm water and power.

The bridge features a dual carriageway with three traffic lanes in each direction and spans 750 m. Key project figures include 6,000 m³ of concrete, 50,000 m³ of excavation, and 4,000 mt of steel.

Omar Bin Al-Khattab w/ Amr Bin Al-Aas - Bridge



LOCATION:

Tabuk

VALUE:

₪ 52,000,000

CLIENT:

Tabuk Municipality



PROJECT NAME:

AL-JAAL W/ WADI WEDGE - BRIDGE

VALUE:

ﷲ 49,722,222

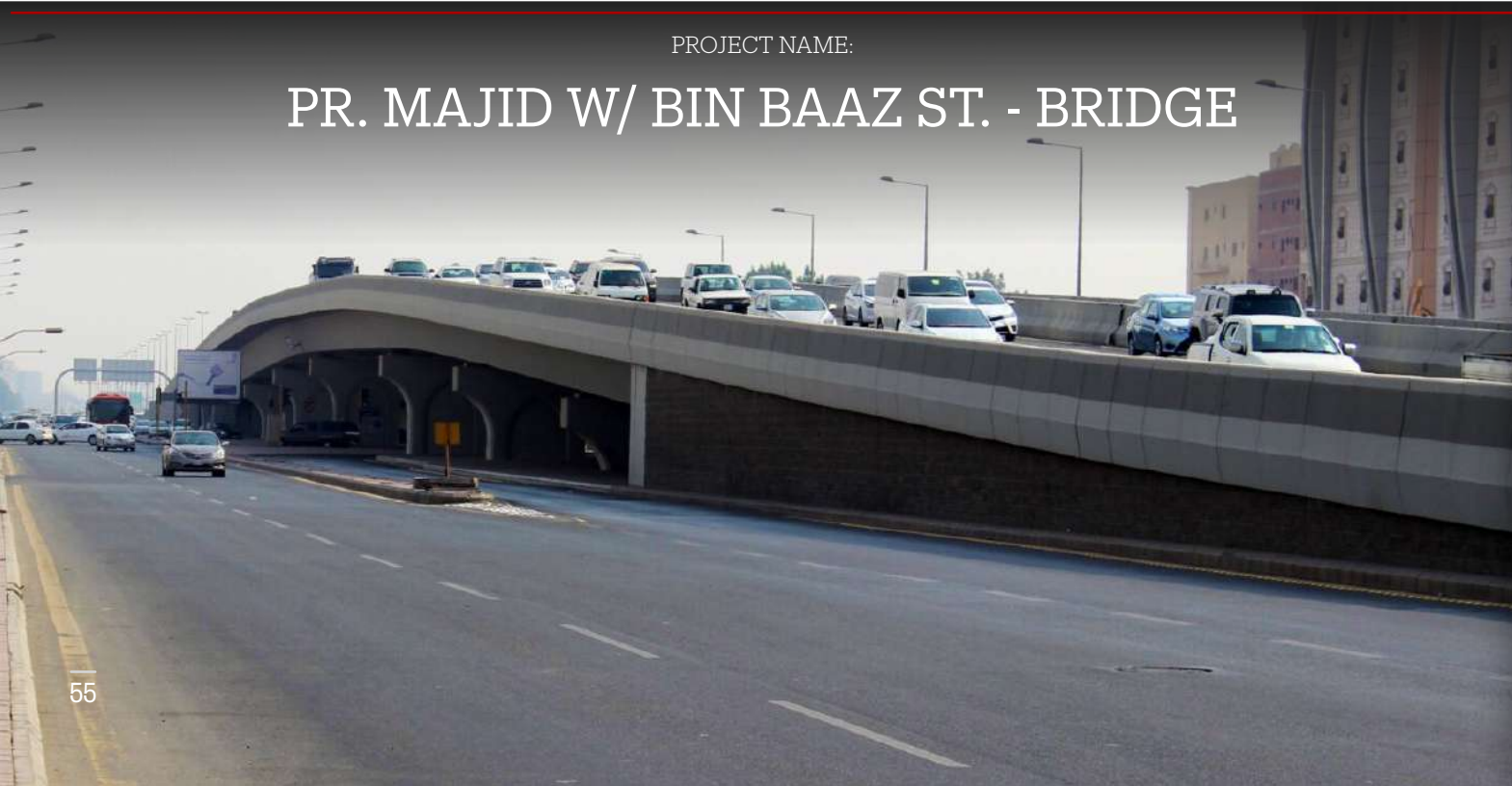
CLIENT:

T.M

Taif Municipality

STATUS:

Complete



PROJECT NAME:

PR. MAJID W/ BIN BAAZ ST. - BRIDGE

VALUE:

ﷲ 49,000,000

CLIENT:

J.M

Jeddah Municipality

STATUS:

Complete

VALUE:

ﷲ 48,368,000

CLIENT:

J.M

Jeddah Municipality

STATUS:

Complete



PROJECT NAME:

MADINAH RD. W/ HALEMA SADIA ST. - BRIDGE

VALUE:

ﷲ 42,481,000

CLIENT:

SEVEN

Saudi Entertainment Ventures

STATUS:

Complete



PROJECT NAME:

PROGRAM 6 - ENABLING WORKS



PROJECT NAME:

CONTROL TOWER

VALUE:

₹ 35,700,000

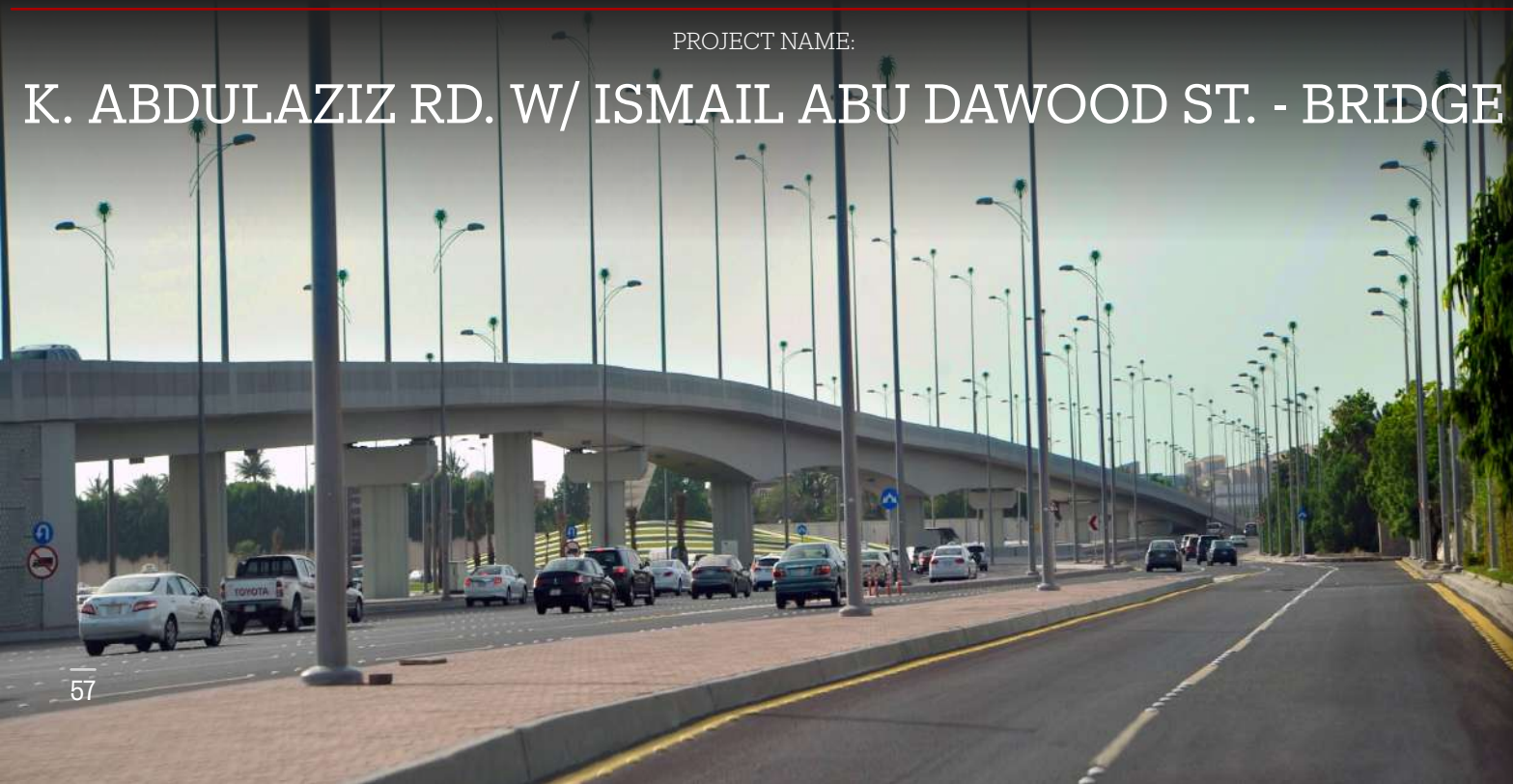
CLIENT:

Y.I.P

Yanbu Industrial Port

STATUS:

Complete



PROJECT NAME:

K. ABDULAZIZ RD. W/ ISMAIL ABU DAWOOD ST. - BRIDGE

VALUE:

₹ 31,700,000

CLIENT:

J.M

Jeddah Municipality

STATUS:

Complete

VALUE:

ﷲ 25,608,235

CLIENT:

J.T.C

Jeddah Transport Company

STATUS:

Complete



PROJECT NAME:

BUS STOPS

VALUE:

ﷲ 25,200,000

CLIENT:

J.M

Jeddah Municipality

STATUS:

Complete



PROJECT NAME:

TAHLIA W/ UM AL-QURA ST. - BRIDGE



PROJECT NAME:

WATER TANK - MUZDALIFAH

VALUE:

﷼ 23,500,000

CLIENT:

MRDA

Makkah Region
Development Authority

STATUS:

Complete



PROJECT NAME:

FISHING HARBOUR

VALUE:

﷼ 19,700,000

CLIENT:

MEWA

Ministry of Agriculture

STATUS:

Complete

VALUE:

ﷲ 13,000,000

CLIENT:

T.M

Tabuk Municipality

STATUS:

Complete



PROJECT NAME:

BOX CULVERT

VALUE:

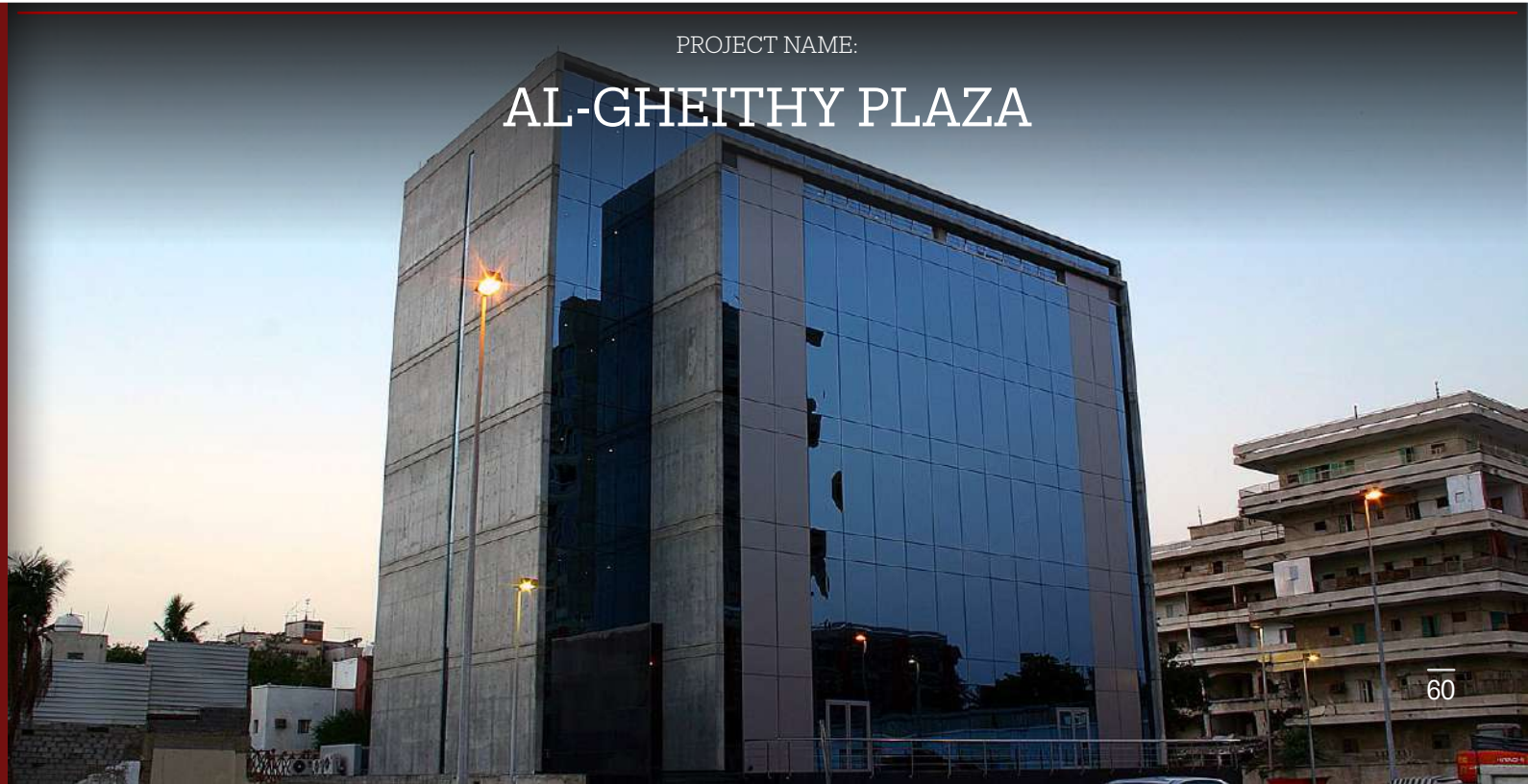
ﷲ 11,000,000

CLIENT:

Private

STATUS:

Complete



PROJECT NAME:

AL-GHEITHY PLAZA



Classification Certificate
Ministry of Municipal Rural Affairs & Housing



Commercial Registration
Ministry of Commerce



GOSI Certificate
General Organisation for Social Insurance



Local Content Certificate
Local Content & Government Procurement Authority



Membership Certificate
Jeddah Chamber



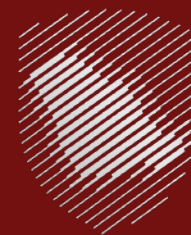
Membership Certificate
Saudi Contractors Authority



Registration Certificate
General Authority of Zakat & Tax



Saudization Certificate
Ministry of Human Resources & Social Development



Zakat/Tax Certificate
Zakat, Tax and Customs Authority



ISO 9001:2015
Quality Management System



ISO 14001:2015
Environmental Management System



ISO 45001:2018
Occupational Health & Safety Management System

Advanced Construction Co. is committed to upholding the highest standards of Quality and HSSE. To this end, we have implemented a robust Quality and HSSE management system and consistently strive for continuous improvement through the successful renewal of our ISO certifications.



CERTIFICATES

Bureau Veritas Certification

ADVANCED CONSTRUCTION COMPANY FOR CONTRACTING AND MAINTENANCE
PO Box 12433, Jeddah 21473, Saudi Arabia

Bureau Veritas Certification Holding SAS - UK Branch certifies that the Management System of the above organisation has been audited and found to be in accordance with the requirements of the management system standards detailed below

ISO 9001:2015
Scope of certification

Construction of Civil Projects, Infrastructure, Roads, Bridges, Tunnels, Underpasses, Landscaping, Site Development, Concrete Structures, Buildings, Water Lines, Sewage Drainage, Electro-Mechanical Works and Maintenance.

Original cycle start date: 21-02-2025
Expiry date of previous cycle: NA
Certification / Recertification Audit date: 04-02-2025
Certification / Recertification cycle start date: 21-02-2025
Subject to the continued satisfactory operation of the organisation's Management System, this certificate expires on: 20-02-2028

Certificate No.: SA003830 Version: 1 Issue date: 21-02-2025

Signed on behalf of BVCH SAS UK Branch
Certification Body Address: 5th Floor, 100 Lower Thames Street, London, EC3R 6DL, United Kingdom
Local office: BUREAU VERITAS CERTIFICATION HOLDING - DUBAI BRANCH, Al Hudayb Awards Building, Block C, 2nd Floor, Jumeirah Road, 2nd December Interchange, P.O. Box 9115, Dubai, United Arab Emirates.
Further clarifications regarding the scope and validity of this certificate, and the applicability of the management system requirements, please call: +96 12 8621071
CER CERTIF ALL TPL 001 Rev 4.3 1/1 4 Nov 2024

ISO 9001:2015

Bureau Veritas Certification

ADVANCED CONSTRUCTION COMPANY FOR CONTRACTING AND MAINTENANCE
PO Box 12433, Jeddah 21473, Saudi Arabia

Bureau Veritas Certification Holding SAS - UK Branch certifies that the Management System of the above organisation has been audited and found to be in accordance with the requirements of the management system standards detailed below

ISO 14001:2015
Scope of certification

Construction of Civil Projects, Infrastructure, Roads, Bridges, Tunnels, Underpasses, Landscaping, Site Development, Concrete Structures, Buildings, Water Lines, Sewage Drainage, Electro-Mechanical Works and Maintenance.

Original cycle start date: 21-02-2025
Expiry date of previous cycle: NA
Certification / Recertification Audit date: 04-02-2025
Certification / Recertification cycle start date: 21-02-2025
Subject to the continued satisfactory operation of the organisation's Management System, this certificate expires on: 20-02-2028

Certificate No.: SA003831 Version: 1 Issue date: 21-02-2025

Signed on behalf of BVCH SAS UK Branch
Certification Body Address: 5th Floor, 100 Lower Thames Street, London, EC3R 6DL, United Kingdom
Local office: BUREAU VERITAS CERTIFICATION HOLDING - DUBAI BRANCH, Al Hudayb Awards Building, Block C, 2nd Floor, Jumeirah Road, 2nd December Interchange, P.O. Box 9115, Dubai, United Arab Emirates.
Further clarifications regarding the scope and validity of this certificate, and the applicability of the management system requirements, please call: +96 12 8621071
CER CERTIF ALL TPL 001 Rev 4.3 1/1 4 Nov 2024

ISO 14001:2015

Bureau Veritas Certification

ADVANCED CONSTRUCTION COMPANY FOR CONTRACTING AND MAINTENANCE
PO Box 12433, Jeddah 21473, Saudi Arabia

Bureau Veritas Certification Holding SAS - UK Branch certifies that the Management System of the above organisation has been audited and found to be in accordance with the requirements of the management system standards detailed below

ISO 45001:2018
Scope of certification

Construction of Civil Projects, Infrastructure, Roads, Bridges, Tunnels, Underpasses, Landscaping, Site Development, Concrete Structures, Buildings, Water Lines, Sewage Drainage, Electro-Mechanical Works and Maintenance.

Original cycle start date: 21-02-2025
Expiry date of previous cycle: NA
Certification / Recertification Audit date: 04-02-2025
Certification / Recertification cycle start date: 21-02-2025
Subject to the continued satisfactory operation of the organisation's Management System, this certificate expires on: 20-02-2028

Certificate No.: SA003832 Version: 1 Issue date: 21-02-2025

Signed on behalf of BVCH SAS UK Branch
Certification Body Address: 5th Floor, 100 Lower Thames Street, London, EC3R 6DL, United Kingdom
Local office: BUREAU VERITAS CERTIFICATION HOLDING - DUBAI BRANCH, Al Hudayb Awards Building, Block C, 2nd Floor, Jumeirah Road, 2nd December Interchange, P.O. Box 9115, Dubai, United Arab Emirates.
Further clarifications regarding the scope and validity of this certificate, and the applicability of the management system requirements, please call: +96 12 8621071
CER CERTIF ALL TPL 001 Rev 4.3 1/1 4 Nov 2024

ISO 45001:2018

05

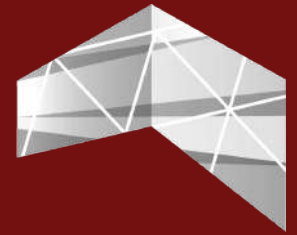
CLIENTS



Al Madinah Region
Development Authority



Eastern Province
Municipality



Holy Makkah
Municipality



Ministry of Environment
Water & Agriculture



Ministry of Transport and
Logistic Services



Municipality of Tabuk



Royal Commission for
Makkah City and Holy
Sites



Royal Commission for
Riyadh City



Saudi Entertainment
Ventures



Jeddah Municipality



Jeddah Transport
Company



Madinah Regional
Municipality



Makkah Region
Development Authority



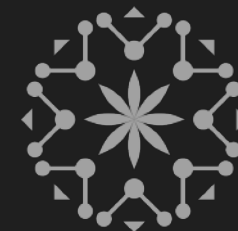
Public Investment Fund



RCRC - Green Riyadh



Riyadh Region
Municipality



ROSHN Group



Saudi Ports Authority
(MAWANI)



Saudi Water Partnership
Company



Taif Municipality



Tawzea

06

APPROVED
BY



ARAMCO



ARDARA



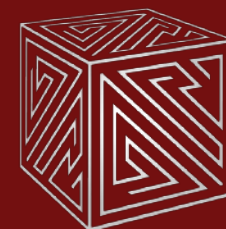
Diriyah Company



Misk Foundation



NEOM



New Murabba



Rua Al-Haram



Rua Al-Madinah



Saudi Downtown Company



KIDANA



National Housing Company



Saudi Electric Company

King Salman International Airport
مطار الملك سلمان الدولي

King Salman International
Airport Development Company



King Salman Park



Majid Al-Futtaim



National Water Company



Qiddiya



Red Sea Global



Saudi Motorsport Company



Soudah Development
Company



Sports Boulevard

ACC, Solving New Challenges with Excellence & Innovation...



**ADVANCED
CONSTRUCTION
CO.**



SCAN FOR MORE

DATE PUBLISHED

January 2025

CONTACT INFORMATION

T. +966 12 650 1555

F. +966 12 650 2244

ADDRESS

P.O. Box 12433, Alghaithy Plaza, Fourth Floor,
Madinah Road, Behind Ministry of Transport,
Jeddah 21473, Kingdom of Saudi Arabia.